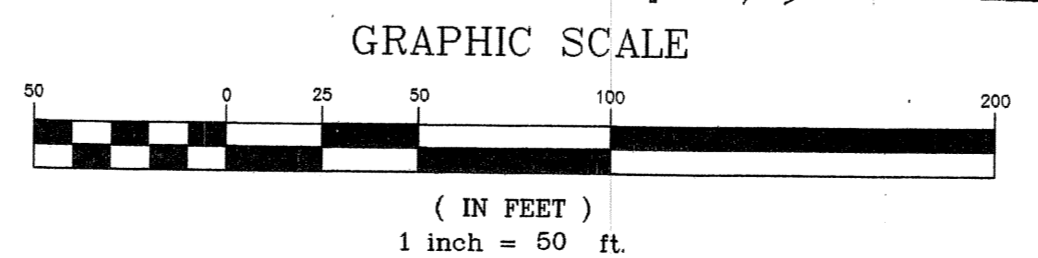
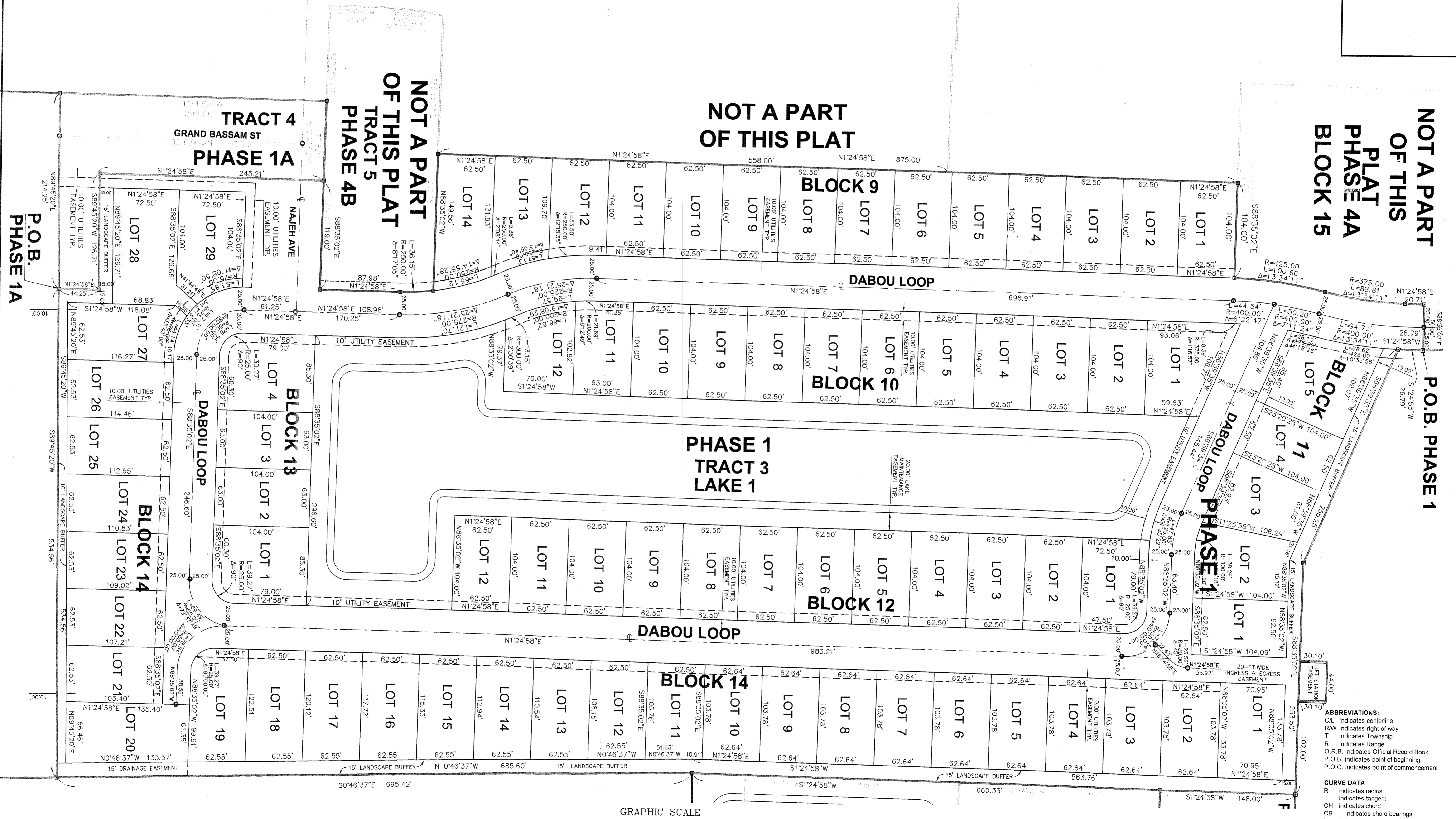


ABIDJAN ESTATES , A PLANNED UNIT DEVELOPMENT, REVISED FINAL PLAT FOR PHASES 1 & 2 CITY OF BELLE GLADE, PALM BEACH COUNTY, FLORIDA, IN PART OF THE NORTHEAST QUARTER OF SECTION 6, TOWNSHIP 44 SOUTH, RANGE 37 EAST



ABBREVIATIONS:
 C/L indicates centerline
 R/W indicates right-of-way
 T indicates Township
 R indicates Range
 O.R.B. indicates Official Record Book
 P.O.B. indicates point of beginning
 P.O.C. indicates point of commencement

CURVE DATA
 R indicates radius
 T indicates tangent
 CH indicates chord
 CB indicates chord bearings
 L indicates arc length
 Δ indicates central angle

LEGEND:
 □ Permanent Reference Monument (P.R.M.)
 ○ Permanent Control Point (P.C.P.)